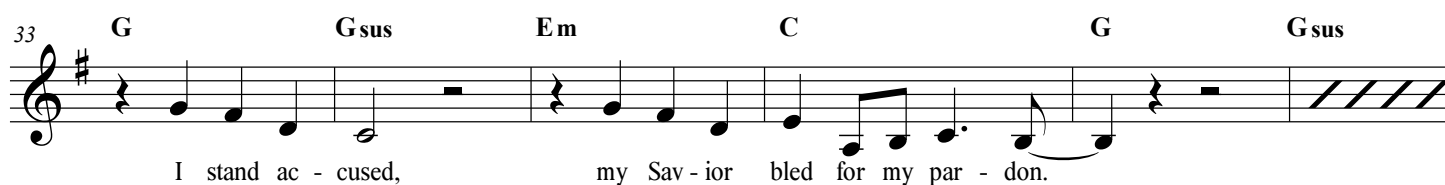
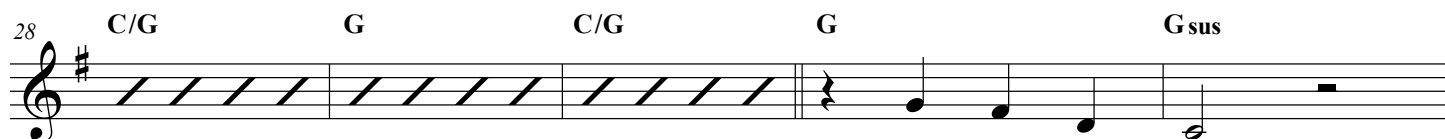
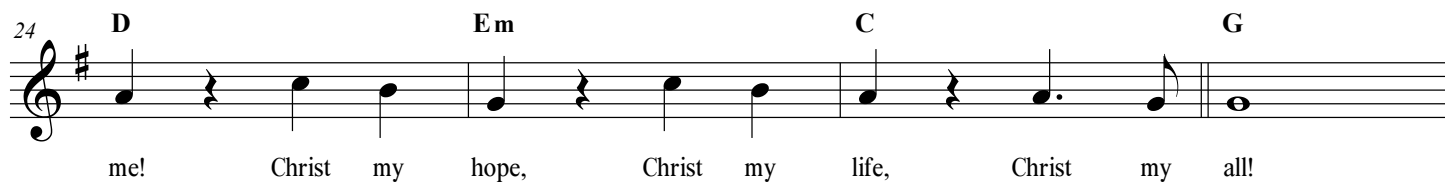
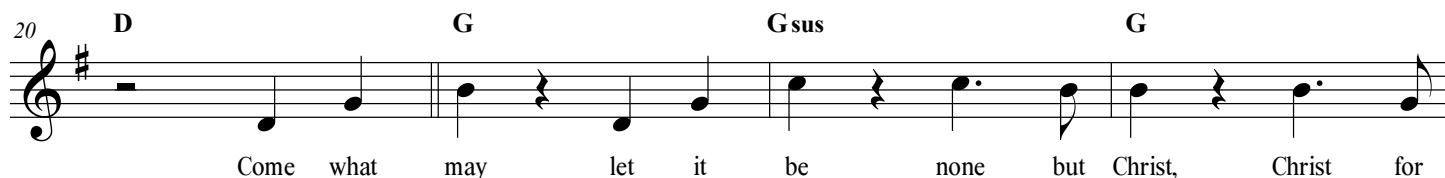
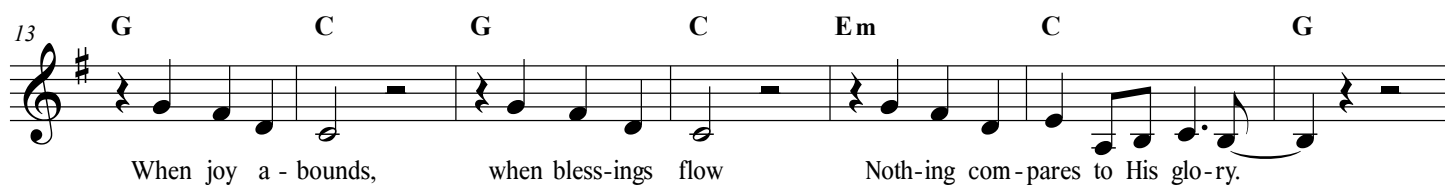


CHRIST MY ALL

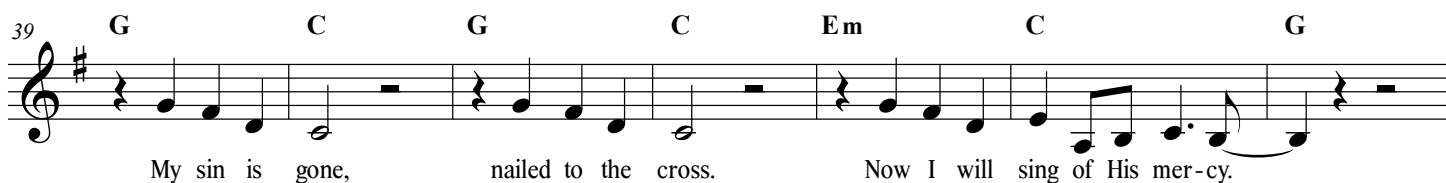
Words and Music by Joel Arcieri
& Matthew Carpenter

♩ = 105



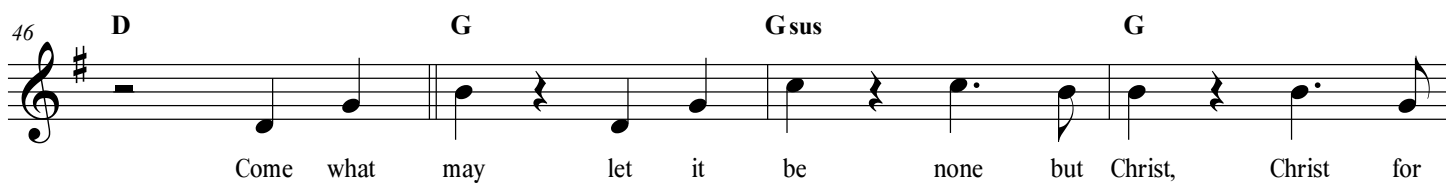
Christ My All

39 G C G C Em C G



My sin is gone, nailed to the cross. Now I will sing of His mer-cy.

46 D G Gsus G



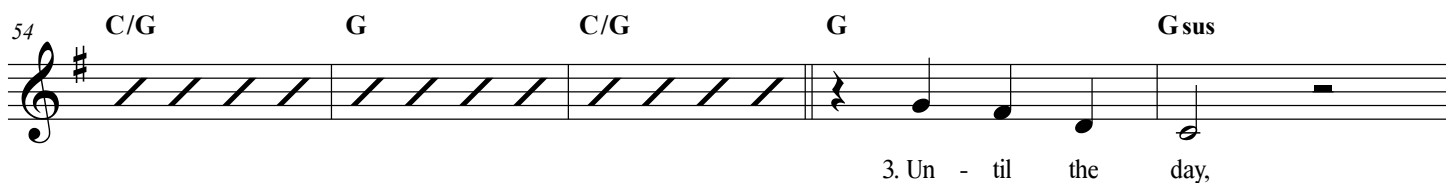
Come what may let it be none but Christ, Christ for

50 D Em C G



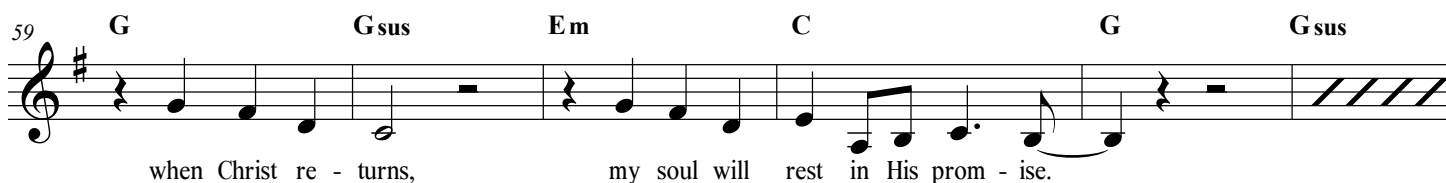
me! Christ my hope, Christ my life, Christ my all!

54 C/G G C/G G Gsus



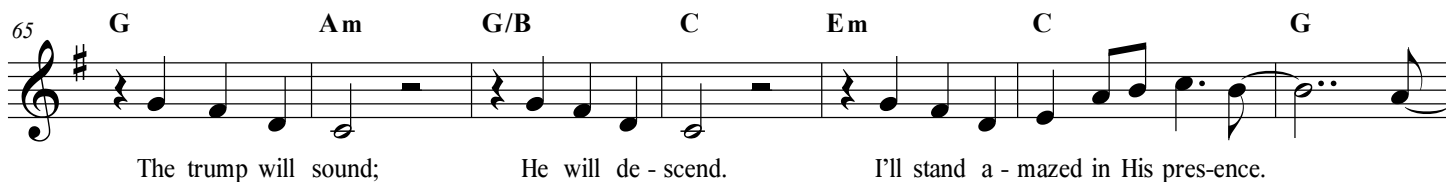
3. Un - til the day,

59 G Gsus Em C G Gsus



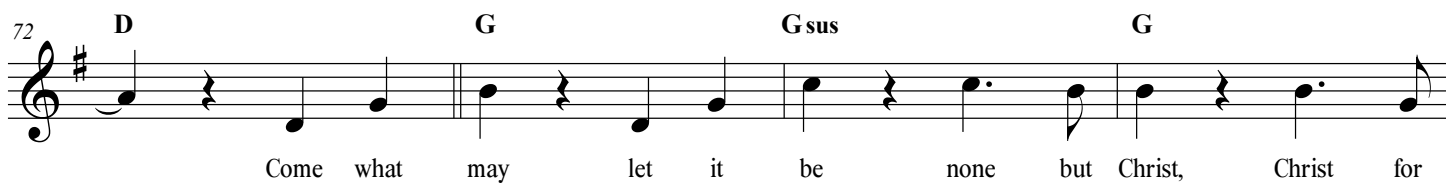
when Christ re - turns, my soul will rest in His prom - ise.

65 G Am G/B C Em C G



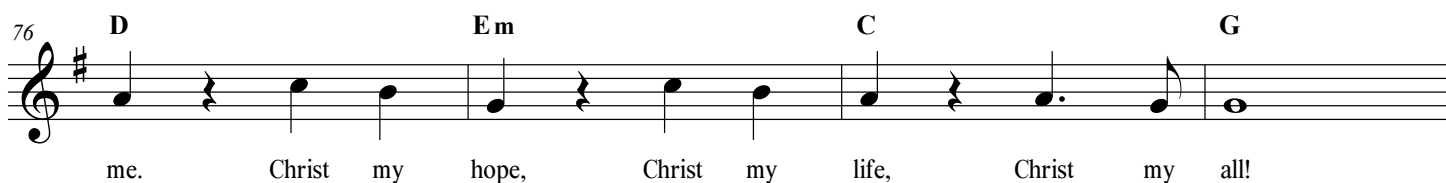
The trump will sound; He will de - scend. I'll stand a - mazed in His pres-ence.

72 D G Gsus G



Come what may let it be none but Christ, Christ for

76 D Em C G



me. Christ my hope, Christ my life, Christ my all!

80 **D** **G** **A m** **G/B**

In all things I've re - ceived all I have, all I

Detailed description: This block contains the first line of music, measures 80 through 83. The key signature has one sharp (F#). The melody consists of quarter and eighth notes. Chord symbols are placed above the staff: D (measure 80), G (measure 81), A m (measure 82), and G/B (measure 83). The lyrics are written below the staff, aligned with the notes.

84 **D/F#** **C/E** **D/F#** **G**

need. Christ my hope, Christ my life, Christ my all!

Detailed description: This block contains the second line of music, measures 84 through 87. The melody continues with quarter and eighth notes. Chord symbols are placed above the staff: D/F# (measure 84), C/E (measure 85), D/F# (measure 86), and G (measure 87). The lyrics are written below the staff.

88 **G sus** **E m** **C** **G**

Christ my hope, Christ my life, Christ my all!

Detailed description: This block contains the third line of music, measures 88 through 91. The melody continues with quarter and eighth notes. Chord symbols are placed above the staff: G sus (measure 88), E m (measure 89), C (measure 90), and G (measure 91). The lyrics are written below the staff.